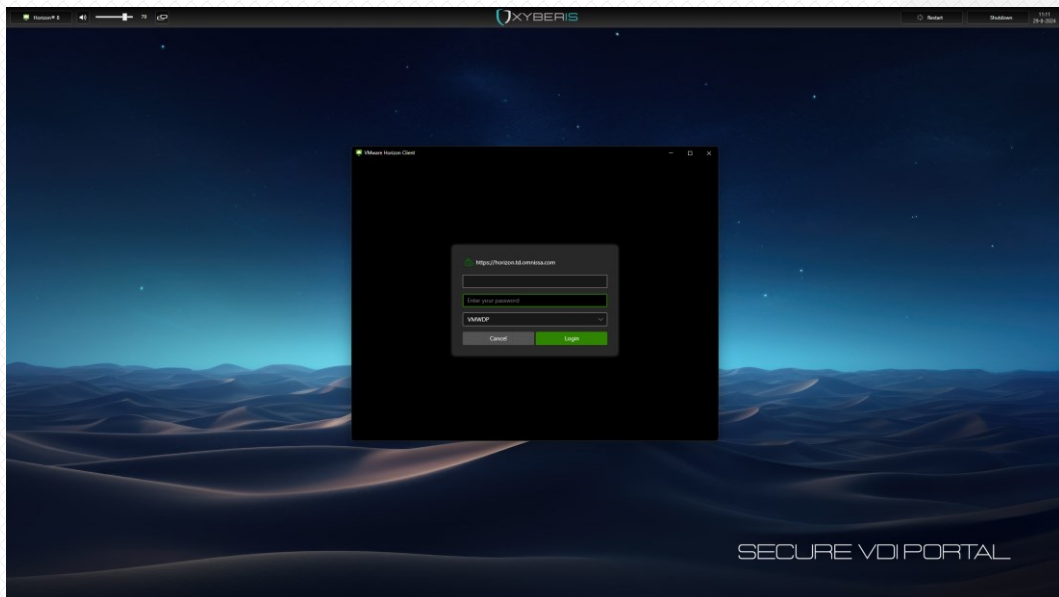




SECURE VDI PORTAL

Gateway to Streamlined Virtual Desktop Access

In today's dynamic work landscape, the need for secure and efficient virtual desktop access is paramount. Instead of using conventional Windows desktops, embrace a revolutionary solution – Secure VDI Portal. Designed with a laser focus on security, manageability, and a streamlined user experience, this software product redefines how you interact with Virtualized Desktop Infrastructure (VDI).



Security is non-negotiable in today's digital realm. Secure VDI Portal offers a fortified fortress, replacing the conventional Windows desktop with a meticulously safeguarded environment. Enjoy the confidence of a fully secured web browser or application connection that prevents multiple instances, tabs, shortcut keys, and context menus. This fortified browser ensures airtight security, eliminating vulnerabilities associated with conventional browsing experiences.

Choose your preferred mode effortlessly - 'Web' for a secure web browsing experience or 'App' for a dedicated application portal. The 'Web' mode boasts a streamlined browser interface without home or address bars, offering familiar browsing functionalities like back, forward, and refresh. Meanwhile, the 'App' mode optimizes the workspace, enabling launching the application, including arguments, to the designated VDI environment.

Secure VDI Portal presents the perfect solution for Windows™ devices seeking access to a Virtual Desktop, enhancing and refining the user experience while bolstering security measures.



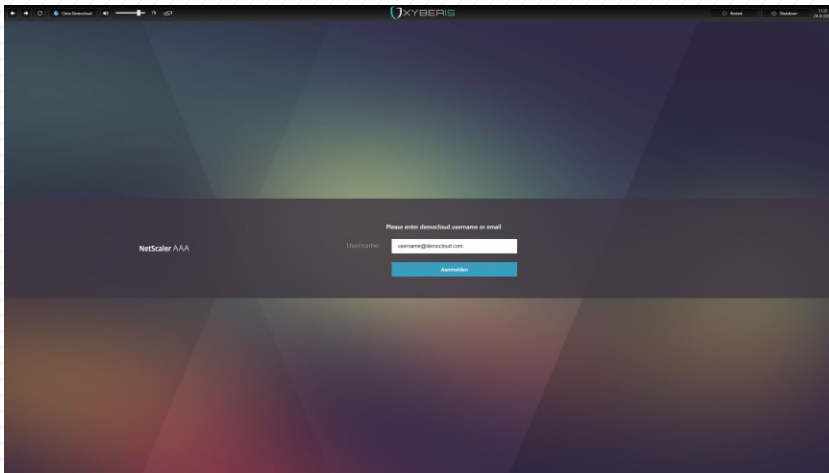


SECURE VDI PORTAL

Two distinct modes to address various use cases where security and optimization is required

Secure VDI Portal is designed to replace the traditional Windows™ desktop environment, offering two distinct display modes that can be accessed either via command line directives or customized within the local configuration file. It operates as a singular instance application, featuring a convenient top menu for seamless access to the VDI workplace, volume controls, and system restart or shutdown functionalities.

The **Web** mode serves as the primary mode, substituting the Windows™ Desktop with a secure web browser. This browser acts as a streamlined gateway for web-based VDI access, such as Citrix® StoreFront™. Equipped with essential buttons like back, forward, and refresh, it intentionally omits an address bar, home button, and settings to mitigate potential security risks. Furthermore, features like an address bar, shortcut keys, tabs, settings, and scroll bars are deliberately disabled to ensure an authentic VDI portal experience.



The **App** mode will also replace the Windows™ Desktop and is capable of launching a single VDI client, including arguments, towards a Virtualized Desktop. It functions as a dedicated portal for applications within the Secure VDI Portal ecosystem. This mode is purpose-built to streamline access to specific applications, such as VMware® Horizon View or Microsoft® RDP, providing a focused and controlled environment. The wallpaper can be customized to align with the corporate identity.

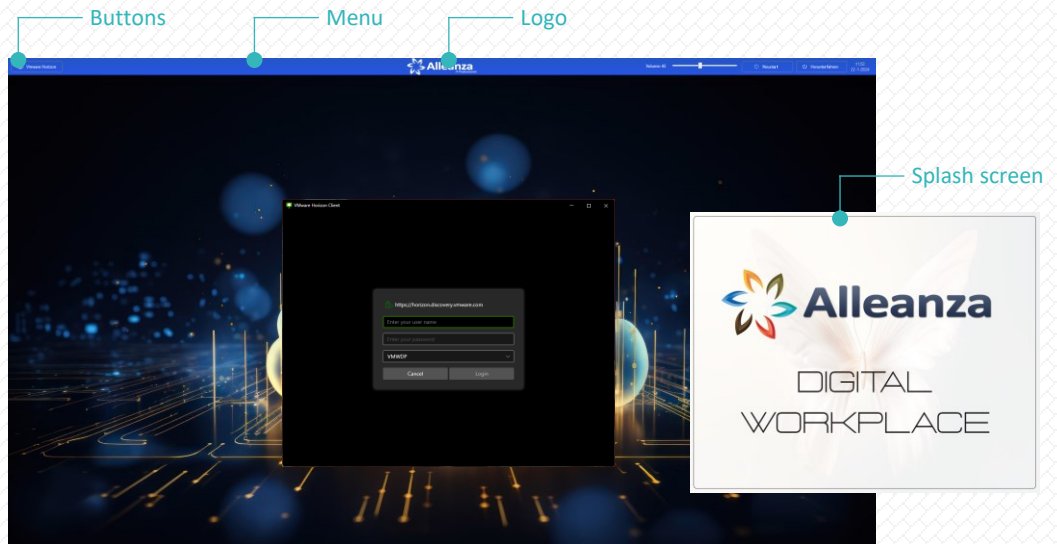




SECURE VDI PORTAL

Collaboratively develop Secure VDI Portal to align with the existing corporate identity

Secure VDI Portal can be tailored towards your branding and corporate identity. This utilizes the benefits derived from employing recognized colors and branding elements and this integration ensures consistency and strengthens brand recognition, enhancing user engagement and trust.



Custom designs are optional and available for both the 'Web' as well as the 'App' mode. The splash screen, top menu, buttons, icons, and logo can all be modified to adhere to specific house style requisites. This customization ensures a uniquely personalized and easily identifiable user experience, regardless of the VDI workplace that will be accessed. In the 'App' mode of Secure VDI Portal, the wallpaper customization feature is readily available in the standard version.

Through the local configuration file, IT administrators can customize all menu items, deciding their visibility and configuration, as well as enabling various language options. This added flexibility enhances the user experience significantly. Not only do the buttons accurately portray their intended functions, but they are also accessible and appropriately labeled based on their respective activities and visibility settings. Organizations can centrally manage and deploy these customized VDI Portal configurations, ensuring uniformity across different devices and user groups, streamlining maintenance and support.

Customization options empower IT administrators to organize the VDI Portal environment according to the preferences, leading to a more enjoyable and tailored workplace experience. Through the integration of corporate branding alongside the inherent security features of Secure VDI Portal, a convergence emerges, bringing together the realms of security and productivity.





SECURE VDI PORTAL

Features and Benefits

Single Instance:

Prevents setting up multiple connections and resource overload by restricting users from launching multiple browser instances.

Two modes:

Facilitates connections through both Web-based (URL) access to VDI Desktops and App-based (VDI Client application, including arguments) connections.

Absence of Address or Scroll Bar (Web mode):

In simulating a genuine VDI client environment, the browser lacks an address bar and disables the scroll bar. Scrolling is enabled via the mouse wheel and arrow keys for user convenience.

No Shortcut Keys or Context Menu (Web Mode):

By design, the browser abstains from supporting shortcut keys, function keys, or context menus, closing potential "back doors" to unauthorized access.

No Settings (hidden for the user):

Abandoning user-configurable settings mitigates the risk associated with local file system access, enhancing overall security.

Customize Your Top Menu for Ultimate Functionality

Easily tailor your top menu to suit your preferences. Choose to show all, hide all, or select any combination of functional buttons on the top menu to achieve the desired functionality.

Custom wallpaper (App mode):

The default wallpaper can be substituted with a preferred wallpaper if it exists in the appropriate folder on the client system.

Audio selector and volume slider:

An audio selector and volume slider in the top menu offers convenient and immediate control over the system's audio output. This feature allows quick adjustment of audio device and sound levels, providing a seamless and efficient audio management experience.

Extend Displays

When connecting for the first time, you can choose to extend the displays. This will switch the display mode from cloning to extending, with the screens aligned from left to right.

Central installation and Configuration

- Central installation and configuration of Secure VDI Portal involves deploying it as a Microsoft Installer using silent install parameters. This method is supported by various major management software solutions.





SECURE VDI PORTAL

Technical specifications

Feature	Technical specification
Application Name and Version:	Secure VDI Portal version 24.05
Supported Platforms:	Windows 11, Windows 10, Windows 10 IoT Enterprise LTSC 2019, Windows 10 IoT Enterprise 21h1 x64
Requirements:	.NET 4.8 and Microsoft Edge Webview2 Runtime
Rendering Engine (Web):	Chromium-based Webview2 version 1.0.2151.40
Supported (Web):	TLS 1.2, 1.3, JavaScript, CSS, HTML5, H.264, DRM, PCM audio, MP3, AAC, and much more
Supported (App):	Microsoft® RDP, VMWare® Horizon View, Amazon® Workspaces, Parallels® Client, other 32- and 64bit VDI Clients
Modes:	Web (URL based VDI access) and App (VDI Client application)
Customization:	Each top menu item can be individually enabled or disabled as per IT preference. Additionally, in the 'App' mode, there is the possibility to customize the wallpaper to the preferred choice.
Address Bar:	Not available in any mode. The URL of the web based VDI environment is provided via a local configuration file.
Scroll Bar:	Scrollbar remains hidden to emulate a full kiosk or VDI client mode. Scrolling is supported through mouse interaction and arrow keys.
Shortcut keys (Web):	Disabled in all modes
Favorites (Web):	Not available in Web mode
Context Menu (Web):	Disabled in Web mode
Settings:	Only via local configuration file. No settings available in 'Web' or 'App' mode.
Updates:	No automatic updates.
License:	Free for personal and commercial use

